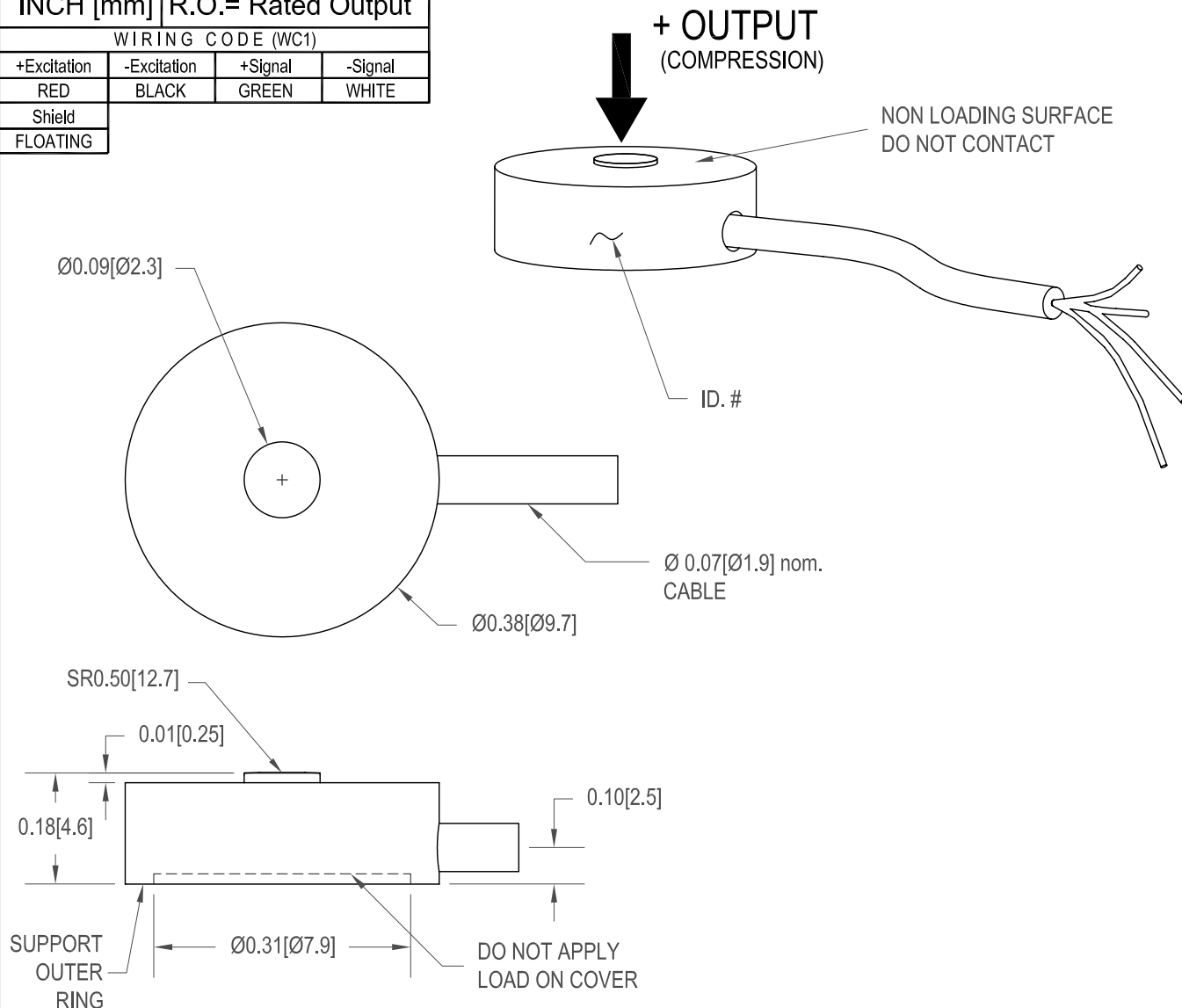


# FUTEK MODEL LLB200 (L1610) SUBMINIATURE LOAD BUTTON LOAD CELL

Drawing Number: FI1051-B

INCH [mm] R.O.= Rated Output

WIRING CODE (WC1)			
+Excitation	-Excitation	+Signal	-Signal
RED	BLACK	GREEN	WHITE
Shield			
FLOATING			



## SPECIFICATIONS:

SAFE OVERLOAD	150% of R.O.
ZERO BALANCE	±3 % of R.O.
EXCITATION (VDC OR VAC)	7 MAX
BRIDGE RESISTANCE	350 $\Omega$ nom.
NONLINEARITY	±0.5% of R.O.
HYSTERESIS	±0.5% of R.O.
NONREPEATABILITY	±0.1% of R.O.
TEMP. SHIFT ZERO	±0.02% of R.O./°F [0.036% of R.O./°C]
TEMP. SHIFT SPAN	±0.02% of LOAD/°F [0.036% of LOAD/°C]
COMPENSATED TEMP.	60 to 160°F [15 to 72°C]
OPERATING TEMP.	-60 to 200°F [-50 to 93°C]
WEIGHT	1 oz [28 g]
MATERIAL	17-4 PH S.S.
DEFLECTION	0.002 [0.05] nom.
CABLE: #29 AWG, 4 Conductor, Spiral Shielded Silicone Cable 10 ft [3m] Long	
ACCESSORIES AND RELATED INSTRUMENTS AVAILABLE	
CALIBRATION (STD)	5 pt. COMPRESSION; 60.4 K $\Omega$ SHUNT CAL. VALUE
CALIBRATION TEST EXCITATION	5 VDC

STOCK NO:	CAPACITIES		RATED OUTPUT (nom.)
	lb	N	
FSH02612	10	44.5	1.5 mV/V
FSH02613	25	111	2 mV/V
FSH02614	50	222	

REFER TO LLB205 FOR BOTTOM CABLE EXIT VERSION

# FUTEK MODEL LLB200 (L1610/L1611) SUBMINIATURE LOAD BUTTON LOAD CELL

**Drawing Number: FI1051-A**

**INCH [mm] | R.O.= Rated Output**

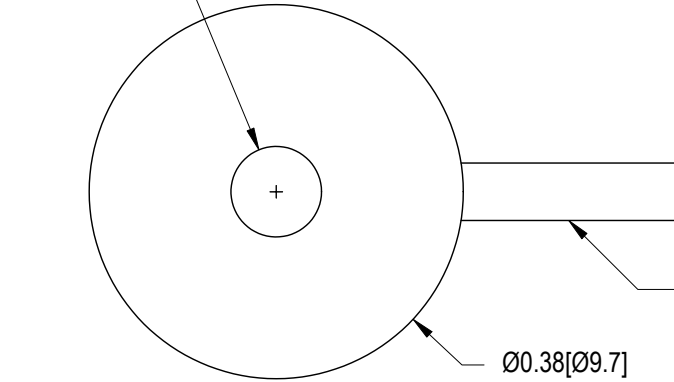
WIRING CODE (WC1)

+Excitation	-Excitation	+Signal	-Signal
RED	BLACK	GREEN	WHITE

**+ OUTPUT  
(COMPRESSION)**

NON LOADING SURFACE  
DO NOT CONTACT

Ø0.09[Ø2.3]



Ø 0.07[Ø1.9] nom.

SR0.50[12.7]

0.01[0.25]

0.18[4.6]

0.10[2.5]

Ø0.31[Ø7.9]

DO NOT APPLY  
LOAD ON COVER

SUPPORT  
OUTER  
RING

STK #	CAPACITIES		VERTICAL CABLE EXIT	RATED OUTPUT
	lb	N		
FSH01003	10	44.5		1.5 mV/V
FSH01029			X	
FSH01005	25	111		2 mV/V
FSH01030			X	
FSH01006				
FSH01031	50	222	X	

## SPECIFICATIONS:

SAFE OVERLOAD	150% of R.O.	
ZERO BALANCE	±3 % of R.O.	
EXCITATION (VDC OR VAC)	7 MAX	
BRIDGE RESISTANCE	350 Ω nom.	
NONLINEARITY	±0.5% of R.O.	} IMPROVED ACCURACY AVAILABLE CONTACT FACTORY
HYSTERESIS	±0.5% of R.O.	
NONREPEATABILITY	±0.1% of R.O.	
TEMP. SHIFT ZERO	±0.02% of R.O./°F [0.036% of R.O./°C]	
TEMP. SHIFT SPAN	±0.02% of LOAD/°F [0.036% of LOAD/°C]	
COMPENSATED TEMP.	60 to 160°F [15 to 72°C]	
OPERATING TEMP.	-60 to 200°F [-50 to 93°C]	
WEIGHT	0.04 oz [1.0 g]	
MATERIAL	17-4 PH S.S.	
DEFLECTION	0.002 [0.05] nom.	
CABLE: #29 AWG, 4 Conductor, Spiral Shielded Teflon Cable 10 ft [3m] Long		
ACCESSORIES RELATED INSTRUMENTS AVAILABLE		
CALIBRATION (STD)	5 pt. COMPRESSION; 60.4 KΩ SHUNT CAL. VALUE	
CALIBRATION TEST EXCITATION	5 VDC	

## VERTICAL CABLE EXIT OPTION

